

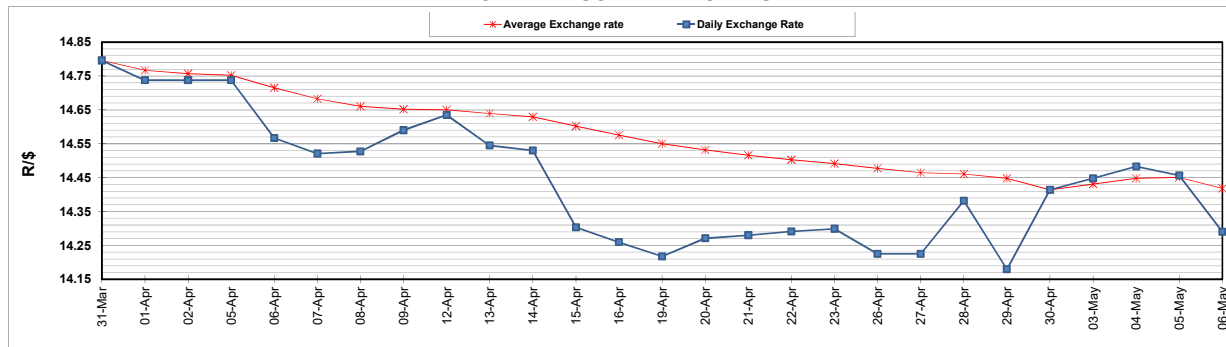
	PETROL 95 ULP	PETROL 93 ULP & LRP	DIESEL 0.05%	DIESEL 0.005%	ILL. PAR.
GAUTENG PUMP PRICE (SA c/l) AS FROM 05/05/2021	1,723.000	1,701.000	-	-	-
WHOLESALE PRICE (SA c/l) AS FROM 05/05/2021	-	-	1,446.620	1,450.020	857.488
SINGLE NATIONAL MAXIMUM RETAIL PRICE	-	-	-	-	1,076.000
BASIC FUEL PRICE - 06/05/2021 (SA c/l)	741.618	729.532	693.440	697.113	682.599
PRESS RELEASE CONTRIBUTION TO BFP 05/05/2021 - 06/05/2021 (SA c/l)	727.170	715.170	659.630	663.030	644.128
UNIT OVER/(UNDER) RECOVERY - 06/05/2021 (SA c/l)	(14.448)	(14.362)	(33.810)	(34.083)	(38.471)
AVERAGE BASIC FUEL PRICE 30/04/2021 - 06/05/2021	741.567	729.021	690.041	694.557	680.630
AVERAGE UNIT OVER/(UNDER) RECOVERY 30/04/2021 - 06/05/2021	(8.997)	(8.451)	(11.811)	(13.527)	(22.702)

ANALYSIS MOVEMENT OF AVERAGE OVER/(UNDER) RECOVERY

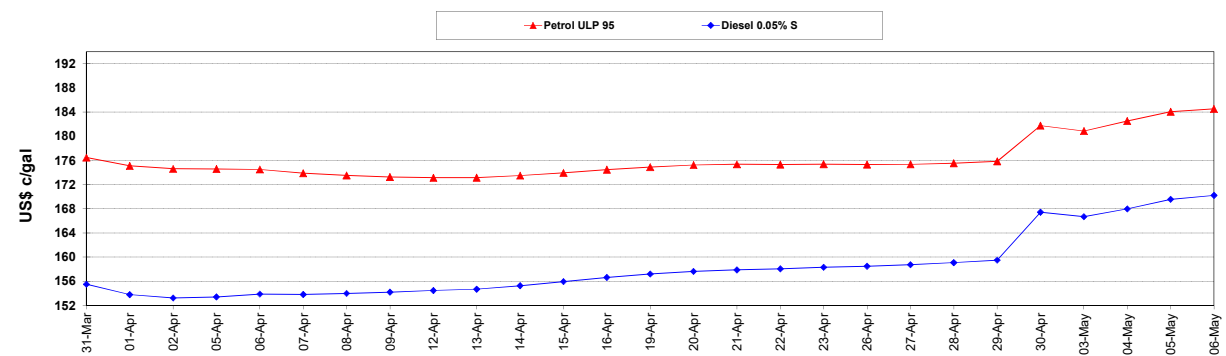
	PETROL 95	PETROL 93	DIESEL 0.05%	DIESEL 0.005%	ILL. PAR.
- MOVEMENT IN INTERNATIONAL PRODUCT PRICES	(10.519)	(9.948)	(13.228)	(14.953)	(24.099)
- MOVEMENT IN EXCHANGE RATE	1.522	1.497	1.417	1.426	1.397
AVERAGE UNIT OVER/(UNDER) RECOVERY 30/04/2021 - 06/05/2021	(8.997)	(8.451)	(11.811)	(13.527)	(22.702)

R/\$ EXCHANGE RATE - (R/\$14.2905- 06/05/2021)

EXCHANGE RATE USED IN BASIC FUEL PRICE



INTERNATIONAL PRODUCT PRICES OF BASKET USED IN BASIC FUEL PRICE



BASIC FUEL PRICE IN SA CENTS PER LITRE

